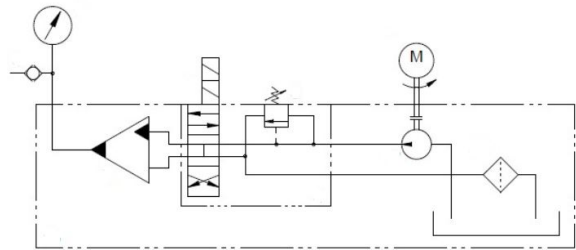


# Stephan Dahlmann

Mechanik und Antriebstechnik GmbH



## HDF2000

### Technical Data

Voltage	230V
Nominal Power Output	0.75 kW
Pump Capacity:	
Low Pressure < 30 bar	3.5 l/min
High Pressure up to 2000bar	0.35 l/min
Weight without/with Oil	32,5/37,5 Kg

Fluid Capacity	5 l
Fluids:	HLP32; HLP46
Dimension:	
Length	45 cm
Width	32 cm
Height	43 cm
Noise Level	82 db(A)

### Features

- gauge 100mm, class 1,0; glycerine filled, 2000bar/30.000psi
- **Cejn 125** hose coupler
- manually adjustable maximum pressure valve 0-2000 bar
- security remote control (24V DC) with 5m cable
- industrial inline oil filter
- steel frame with rubber feet
- oil sight glass