

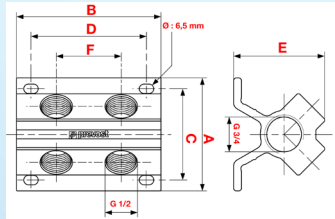
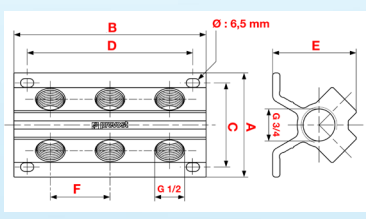
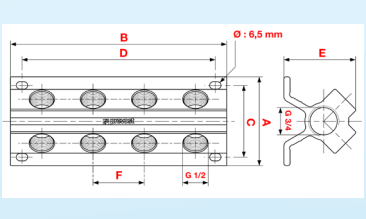
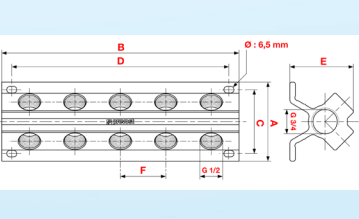
MANIFOLDS

MF 104S4 / S6 / S8 / S10

→ PRODUCT DESCRIPTION

Several outlets with a new ergonomic design :

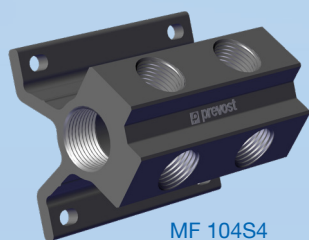
- Inlet : 3/4" BSP
- Outlet : 1/2" BSP
- Drill \varnothing : 6.5 mm

	MF 104S4						MF 104S6						MF 104S8						MF 104S10					
	4 Outlet						6 Outlet						8 Outlet						10 Outlet					
																								
Dimension	A	B	C	D	E	F	A	B	C	D	E	F	A	B	C	D	E	F	A	B	C	D	E	F
mm	78	100	63	80	63	45	78	145	63	125	63	45	78	190	63	170	63	45	78	235	63	215	63	45

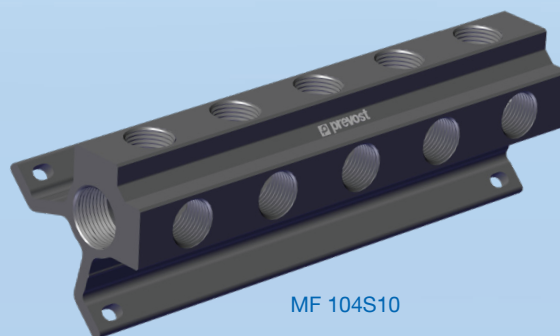
→ APPLICATIONS

These manifolds are used in vertical wall position (end network down for example). They can also be installed on the ground.

They are delivered in cardboard packaging with the PrevoS1 quick release safety couplings, and the purge to be mounted in order to have an equipped block (ex: MF 104S4IS).



MF 104S4



MF 104S10

→ TECHNICAL SPECIFICATIONS

- Operating pressure: 0 to 16 bar
- Temperature: -20°C to 80°C
- Material: Aluminum