

MOBILE, HIGH PERFORMANCE INDUCTION HEATING

DHI-100F/C and DHI-120F/C

NEW!

SAFE HEATING FOR THE AUTOMOTIVE AND WELDING INDUSTRY

Mobile water-cooled induction heating tip change option. The device is intended for heating of ferromagnetic and conductive materials. Thanks to the compact design on a removable chassis, high performance, versatile use with smooth output adjustment, it is suitable for various applications in production plants, workshops, welding shops, garages, maintenance, automations and other branches of industry.

SUPPORTED TECHNOLOGIES:

DHCS3, BIPT, DIPA, QCT, URC,
ACMS, DFU

IDEAL TOOL FOR EVERY WORKSHOP

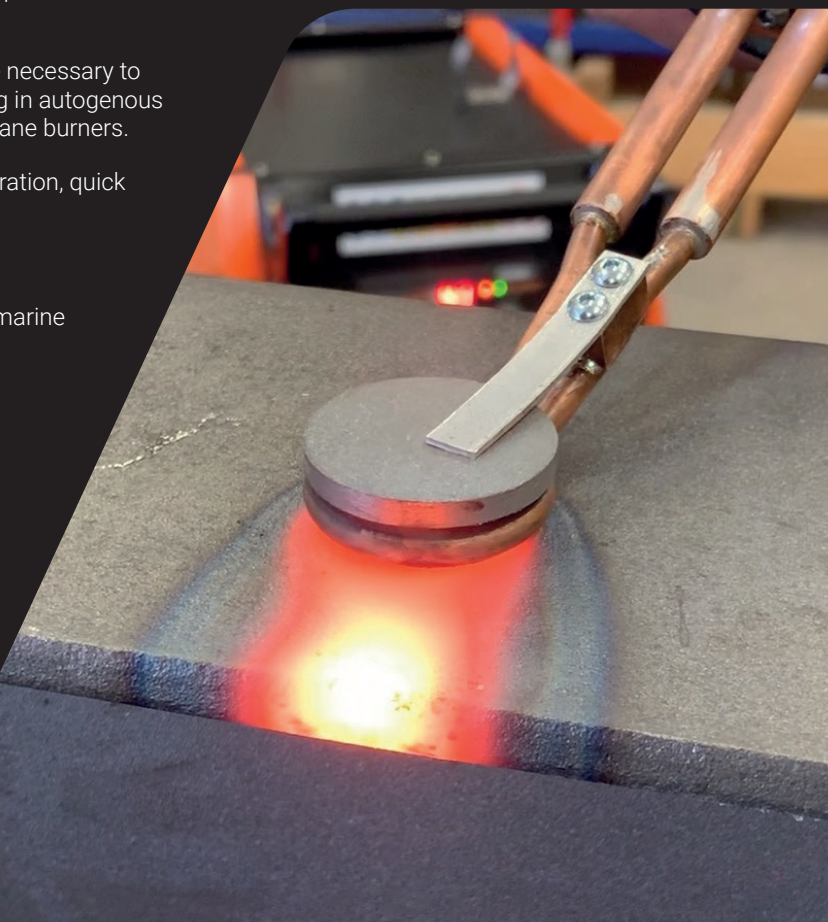
- Heating prior to hardening, straightening, bending, forging of pipes, round steel, profiles, also suitable for annealing.
- Low operating costs without the necessary to provide the operators with training in autogenous working methods and propane-butane burners.
- Simplicity and ease of use - easy operation, quick heating process.
- Safety and ecology - absence of flame.
- Use in the automotive, railway, aerospace, marine and industry in general, metal-working, maintenance...

ADVANTAGES

- Mobility - weight of 58kg including water cooling.
- Replacement of autogenous working methods (flame heating).
- Very quiet operation.
- Output 10 kVA / 12 kVA, load factor.
- Ease of use - 4 to 6-m long burner.
- Flexibility and ease of use.
- Robust and big wheels on the removable chassis.

BASIC SET:

- DHI-100F (Ordering Code 09-001-01)
- DHI-120F (Ordering Code 09-002-01)
- Circular focusing inductor
- Coolant 10 l

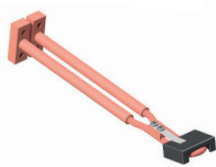


EQUIPMENT

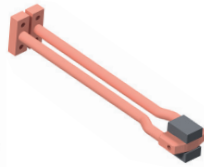
- Clear display with visualisation of the parameters
- Water cooling of inductors
- Smooth output adjustment 10-100%
- Timer and factory setting function
- USB connection for software update
- CP continuous heating and continuous CF field mode
- LED inductor lighting
- Removable chassis
- Remote-control connector
- Temperature sensor connector

BROAD RANGE OF INDUCTORS AND ACCESSORIES

Inductors for DHI-100/120F



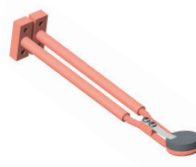
Focusing inductor



Square direct focusing inductor



Lateral square focusing inductor



Circular focusing inductor

inductors for DHI-100/120C possibility of various custom coils



"U" profile inductor



Single crossed thread inductor



Dual thread inductor



35° single thread inductor

Accessories



Pedal remote control



Contactless temperature sensor



Coolant 10 l

	50 Hz	AM	VA	Freq. kHz	Fan	IP	mm	kg	m	M
DHI-100F/C DHI-120F/C	3x400V	3x13,3 3x16	10 000 12 000	18 - 45	OK	21	400x760x700	58	5	4/6

- Lower operating costs
- Safe usage
- Heating point precision
- Heating rate
- High mobility
- Very quiet operation
- Ecological

RETURN ON INVESTMENT
according to type of application
Up to 1 year.

