

# MP series Electric Pumps

Please choose the pump according to the below parameters



Pump Oil tank=4L or 8L



Pump Oil tank>8L

▼ Example for the discription of pump model:

<b>M</b>	<b>P</b>	<b>04</b>	<b>A</b>	<b>S</b>	<b>220</b>
1	2	3	4	5	6
Drive type	Model	Available oil	Valve type	Motor power	Voltage

**1 Drive Model**

M =Electric drive  
SM =Air drive

**2 Model**

P =Pump

**3 Dil Capacity**

04 = 4L  
08 = 8L  
13 = 13L  
18 = 18L  
24 = 24L  
32 = 32L  
56 = 56L

**4 Valve Type**

A =double-acting(pressure hold)  
B =single-acting(pressure hold)  
C =single-acting(pressure hold)  
D =single-acting  
H =double-acting(pressure hold)

**5 Motor Power**

S = 1.0KW  
T = 1.1KW,

**6 Voltage**

220=220V ,  
Single phase, 50Hz  
380=380V ,  
Three phase, 50Hz

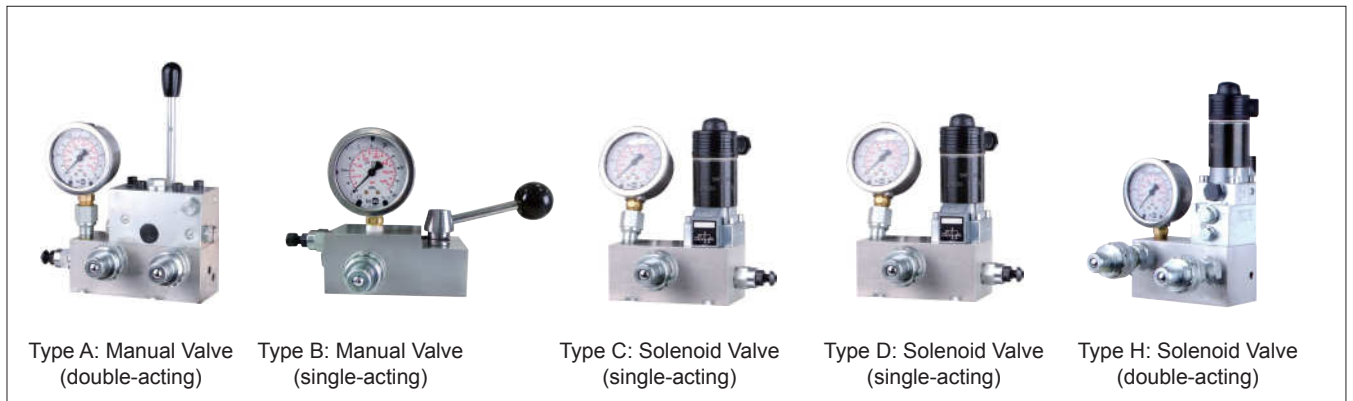
Example :

Model:MP04HS220  
Max Pressure: 700bar  
Power: 1.0KW  
Valve type: Type H,solenoid valve (double acting,pressure hold)  
Oil Available: 4L  
voltage: 220V  
Frequency: 50Hz

Parameters

Oil Capacity	Motor Power (KW)	Rated Pressure (bar)		Flow (L/min)		Voltage/Frequency Source of power	Max Pressure (bar)
		Low	High	Low	High		
4L	1.0	650	700	4	0.6	220V, 50Hz 380V, 50Hz;	700
≥8L	1.1			5.5/7.2	0.8		

Valve models



Type A: Manual Valve (double-acting)


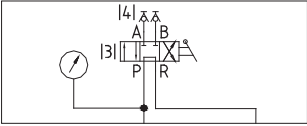

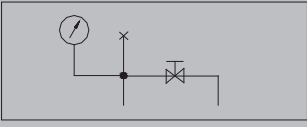

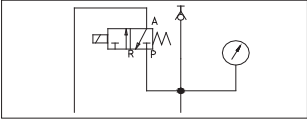

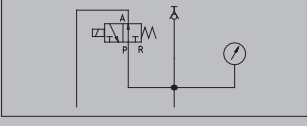

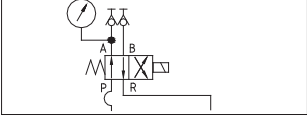
Type B: Manual Valve (single-acting)

Type C: Solenoid Valve (single-acting)

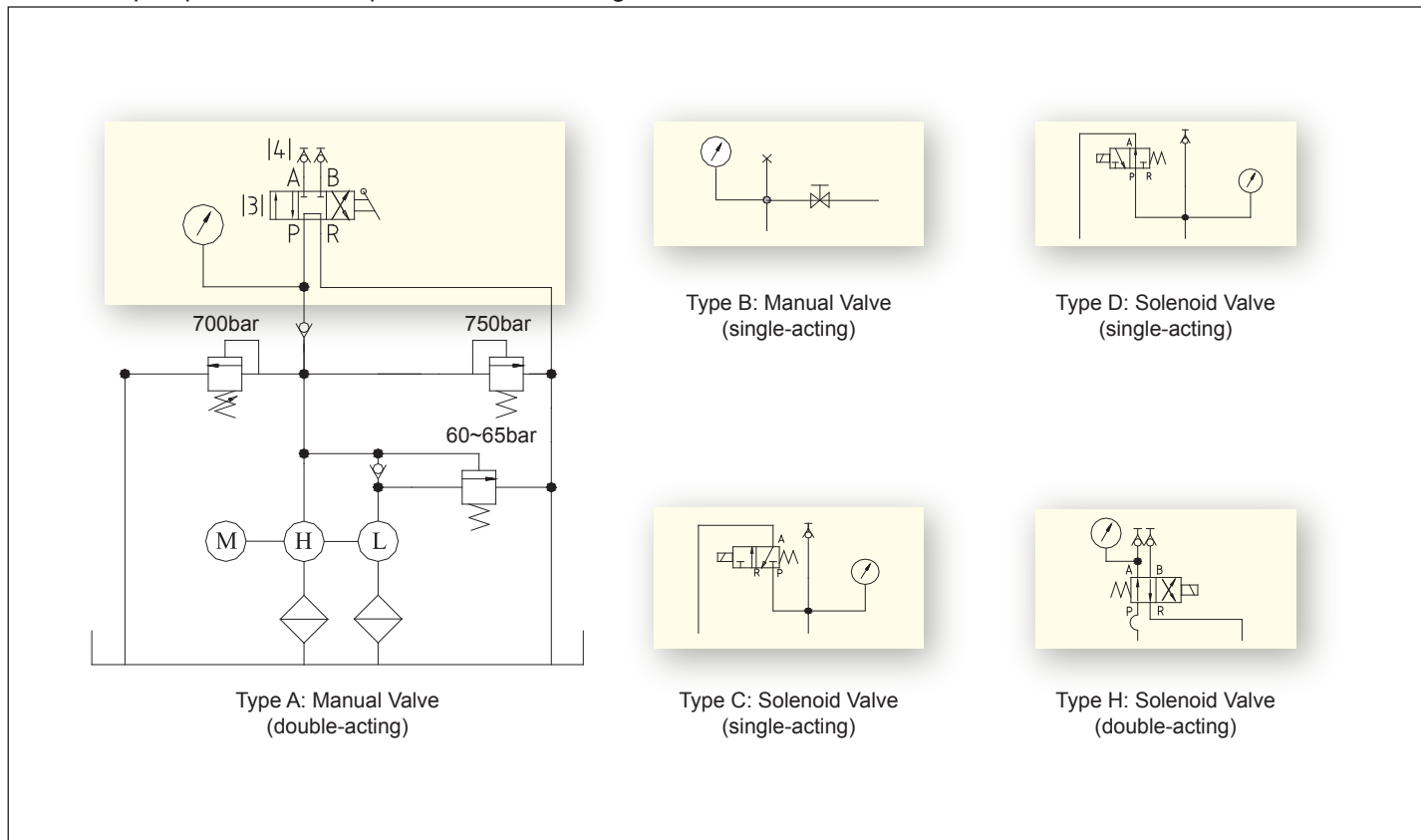
Type D: Solenoid Valve (single-acting)

Type H: Solenoid Valve (double-acting)

## Universal valve block of MP series pump

Valve Block	Introduction To Basic Functions	Circuit Diagram
Type A: Manual Valve (double-acting)	 <p>By the manual valve to operate the double acting tank, it responds quickly, and the reservoir piston will stop at once and keep the pressure for long period.</p>	
Type B: Manual Valve (single-acting)	 <p>By the manual valve to operate the single acting tank, easy control, responds quickly, and keep the pressure for long period.</p>	
Type C: Solenoid Valve (single-acting)	 <p>By the solenoid valve to operate the single acting tank, easy control, responds quickly, and keep the pressure for long period.</p>	
Type D: Solenoid Valve (single-acting)	 <p>Press a button on the solenoid valve to control the outputting and inputting oil of the oil pump.</p>	
Type H: Solenoid Valve (double-acting)	 <p>By the solenoid valve to operate the double acting tank, it responds quickly, and the reservoir piston will stop at once and keep the pressure for long period.</p>	

### MP series pump valve block replacement circuit diagram



Above the valve block can be installed in any size of oil tank